



## Proof of Performance Leica M11

The following pictures describe the benefits of the Leica M11 in detail.



### Resolution

At a resolution of 60MP you can crop or zoom in without loss of quality. Pay special attention to the sign at the end of the hallway, in 100% view you can read the sign "Chill mal Berlin", which cannot be read in 18 or 36 MP.

Apo Summicron 35 mm | f 4 | 1/320s | ISO 400

### Resolution

With up to 60MP, you'll be able to utilize more detail and take advantage of the M11's excellent sharpness. Pay special attention to the fine details in the facade of the Elbphilharmonie in Hamburg, where you can even see through the windowpanes.

Apo Summicron 35 mm | f 8 | 1/320s | ISO 125



### Resolution

The combination of 60 MP and the Leica APO Summicron-M 35 mm/2 ASPH. offer unprecedented resolution and sharpness imaging. This is particularly visible on the exterior of the houses, where you can even see the different structures of the facade.

APO Summicron 35 mm | f 8 | 1/160s | ISO 100

### Color Rendering

The modified color algorithm and latest sensor technology lead to improved color reproduction. Pay special attention to the overall smooth and homogeneously balanced color reproduction even in the shadow areas.

Apo Summicron 35 mm | f 4 | 1/320s | ISO 64





## Proof of Performance Leica M11

The following pictures describe the benefits of the Leica M11 in detail.



### Sharpness Performance

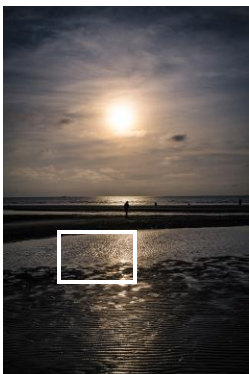
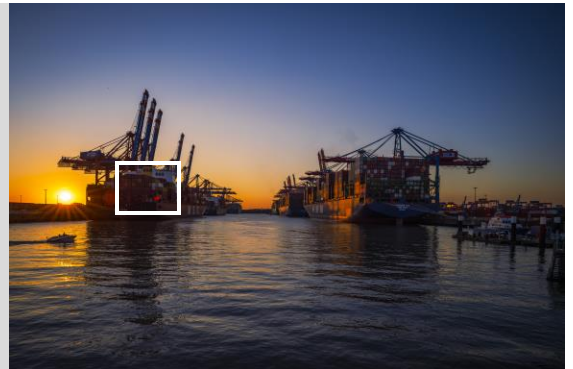
Our lenses are designed to work perfectly with the Leica M11 sensor. Whether 18MP, 36MP or even 60MP resolution, the sensor guarantees the superior imaging performance of our lenses - right to the edges and corners of the image.

Apo Summicron 35 mm | f 2 | 1/1250s | ISO 64

### Dynamic Range

With the high dynamic range, you can perfectly capture all the details between the lightest and darkest tones. Notice the details in the containers of the ships and the sunset perfectly exposed at the same time.

Summilux 21 mm | f 8 | 1/125s | ISO 64



### Dynamic Range

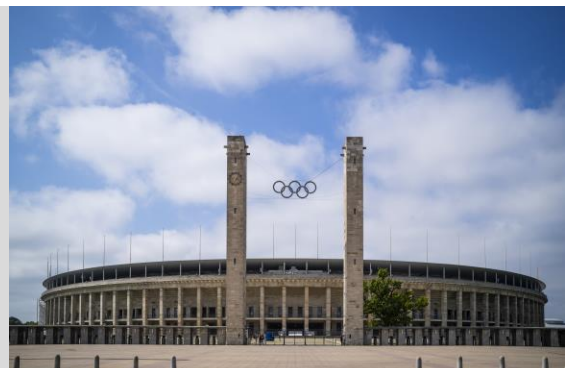
Even in difficult lighting situations, you are perfectly equipped thanks to the high dynamic range. Even the finest tonal gradations, as here in the backlight of the low sun and in the structures of the sand, are perfectly recognizable.

Apo Summicron 35 mm | f 8 | 1/2000s | ISO 64

### Integrated Light Metering

The M11 features the newly developed Integrated Exposure Metering. This means that neither bright tones break out, nor do the dark areas of your shots overflow. For an even better image quality of your M11.

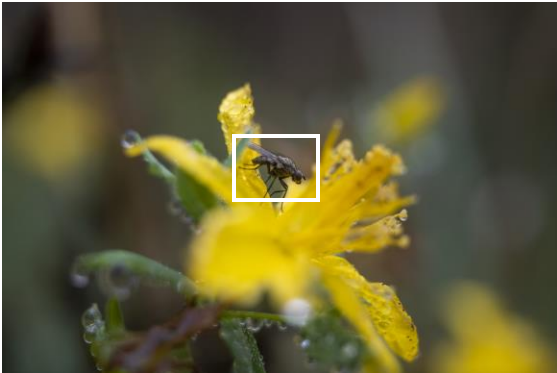
Apo Summicron 35 mm | f 8 | 1/320s | ISO 64





## Proof of Performance Leica M11

The following pictures describe the benefits of the Leica M11 in detail.



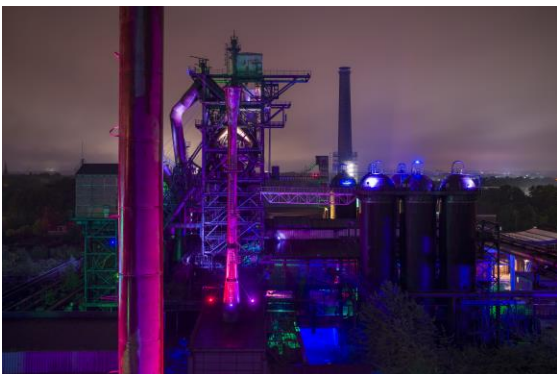
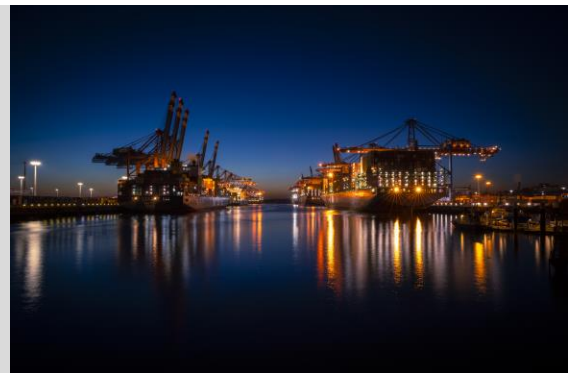
### Live View Stabilisation

The new Live View stabilization is especially helpful in the macro range, in combination with the Live View zoom, where millimeters are important to put the focus in the right place.

APO Summicron 35 mm + Makro Adapter  
f 8 | 1/320s ISO 800

### Long Exposure

The maximum shutter speed of up to 60 minutes gives you the opportunity to take pictures even in difficult lighting conditions. Pay special attention to the excellent separation of the very finest details in the ships - even at long exposure times. Summilux 21 mm | f 11 | 20s | ISO 64



### Long Exposure

With the new function to switch off noise reduction during a long exposure, it is possible to capture your subjects in a faster sequence, which are only of short duration.

Apo Summicron 35 mm | f 11 | 20s | ISO 64

### Shooting without Tripod

Even at the full resolution of 60 MP, artistic shots succeed without a tripod due to longer exposure times directly "out of hand". Like in this case, the motion blur of the S-Bahn without blurring the rest of the image and keeping the sharpness.

Apo Summicron 35 mm | f 8 | 1/8s | ISO 100

